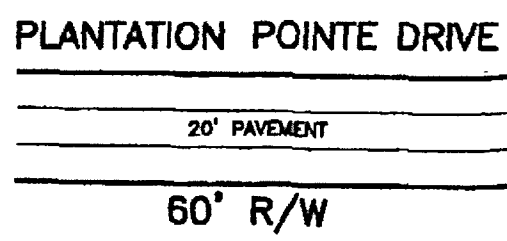
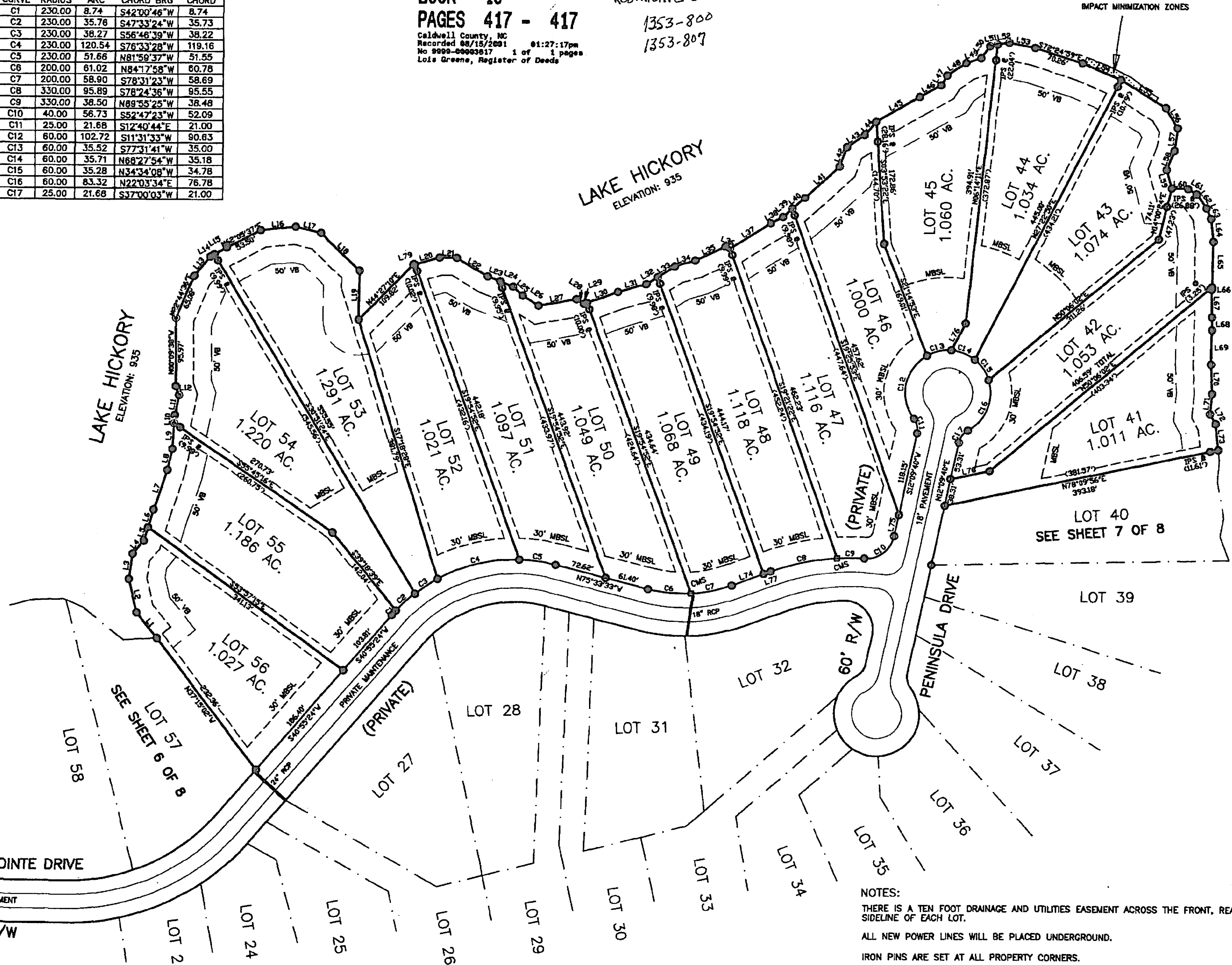


BOOK 19
 PAGES 417 - 417
 Caldwell County, NC
 Recorded 08/15/2001 01:27:17pm
 No 9999-00003617 1 of 1 pages
 Lois Greene, Register of Deeds

Restrictive Covenants
 1353-800
 1353-807

LINE	LENGTH	BEARING
L1	45.69	N38°44'33"W
L2	48.98	N13°09'21"W
L3	36.25	N08°49'13"E
L4	23.82	N39°36'19"E
L5	20.00	N17°14'05"E
L6	26.26	N17°14'05"E
L7	59.61	N19°06'18"E
L8	30.60	N12°08'40"E
L9	36.15	N03°56'20"E
L10	11.40	N03°56'20"E
L11	29.67	N11°42'00"E
L12	13.60	N20°09'21"W
L13	35.84	N39°40'27"E
L14	15.92	N51°37'28"E
L15	6.26	N51°37'28"E
L16	20.00	N84°06'03"E
L17	42.63	N75°03'00"E
L18	36.75	S45°47'35"E
L19	23.74	S00°43'59"W
L20	36.51	N74°33'59"E
L21	24.15	S88°30'09"E
L22	51.10	S59°25'34"E
L23	18.71	S68°52'49"E
L24	19.79	S68°52'49"E
L25	18.87	S47°08'04"E
L26	26.61	S57°12'46"E
L27	54.48	N79°58'45"E
L28	12.44	S57°10'41"E
L29	4.62	N70°13'17"E
L30	46.40	N70°13'17"E
L31	41.05	N74°09'59"E
L32	18.58	N57°48'51"E
L33	28.76	N57°48'51"E
L34	20.13	N73°28'58"E
L35	46.35	N64°58'32"E
L36	6.59	S69°33'20"E
L37	67.53	N57°37'10"E
L38	19.39	N61°04'56"E
L39	17.43	N48°51'04"E
L40	23.32	N48°51'04"E
L41	66.12	N47°36'36"E
L42	29.06	N20°12'39"E
L43	29.78	N56°19'16"E
L44	25.31	N40°06'45"E
L45	70.34	N60°11'54"E
L46	39.99	N61°26'44"E
L47	15.91	N52°00'08"E
L48	31.98	N55°17'04"E
L49	21.84	N72°24'13"E
L50	21.33	N36°51'57"E
L51	10.37	N79°12'47"E
L52	16.99	N79°12'47"E
L53	37.25	S78°32'21"E
L54	59.22	S67°11'27"E
L55	74.15	S58°20'37"E
L56	39.14	S30°27'28"E
L57	32.02	S08°21'39"W
L58	28.87	S21°30'56"W
L59	27.16	S15°13'02"E
L60	23.16	S89°14'21"E
L61	14.01	S58°27'58"E
L62	24.75	S35°19'06"E
L63	15.89	S22°22'50"E
L64	32.80	S06°13'37"E
L65	64.21	S01°29'19"W
L66	3.37	S01°29'19"W
L67	38.93	S09°20'56"E
L68	18.20	S00°20'56"E
L69	48.21	S01°35'23"W
L70	41.32	S03°06'06"E
L71	28.66	S06°01'20"W
L72	16.04	S29°24'40"E
L73	36.70	S06°08'49"E
L74	47.44	S70°05'08"W
L75	30.46	S12°09'40"W
L76	42.67	N27°22'30"E
L77	10.53	S70°05'08"W
L78	56.05	S78°09'56"W
L79	2.03	N74°33'59"E

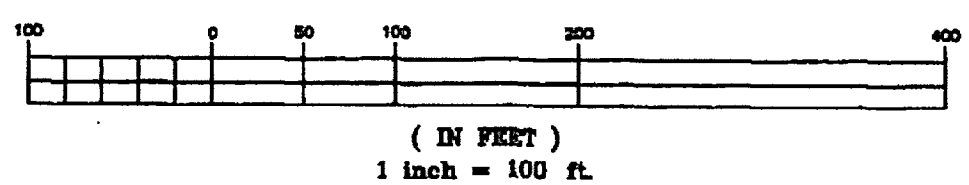
CURVE	RADIUS	ARC	CHORD	BRG	CHORD
C1	230.00	8.74	S42°00'46"W	8.74	
C2	230.00	35.78	S42°33'24"W	35.73	
C3	230.00	38.27	S56°46'39"W	38.22	
C4	230.00	120.54	S76°33'28"W	119.16	
C5	230.00	51.66	N81°59'37"W	51.55	
C6	200.00	61.02	N84°17'58"W	60.78	
C7	200.00	58.90	S78°31'23"W	58.69	
C8	330.00	95.89	S78°24'36"W	95.55	
C9	330.00	38.50	N89°55'25"W	38.48	
C10	40.00	56.73	S52°47'23"W	52.09	
C11	25.00	21.68	S12°40'44"E	21.00	
C12	60.00	102.72	S11°31'33"W	90.83	
C13	60.00	35.52	S77°31'41"W	35.00	
C14	60.00	35.71	N88°27'54"W	35.18	
C15	60.00	35.28	N34°34'08"W	34.78	
C16	60.00	83.32	N22°03'34"E	76.78	
C17	25.00	21.68	S37°00'03"W	21.00	



FINAL SUBDIVISION PLAT FOR

PLANTATION POINTE

GRAPHIC SCALE



- LEGEND:**
- IPS-----IRON PIN SET
 - CMS-----CONCRETE MONUMENT SET (CONTROL CORNER)
 - SD-----SIGHT DISTANCE EASEMENT
 - RCP-----REINFORCED CONCRETE PIPE
 - MBSL-----MINIMUM BUILDING SETBACK LINE
 - UNMARKED POINT
 - VB-----50' VEGETATIVE BUFFER
- MINIMUM BUILDING SETBACK LINES:**
- FRONT-----30 FEET
 - SIDELINE-----10 FEET
 - SIDELINE ABUTTING STREET-----30 FEET
 - REAR-----25 FEET

NOTES:

THERE IS A TEN FOOT DRAINAGE AND UTILITIES EASEMENT ACROSS THE FRONT, REAR, AND EACH SIDELINE OF EACH LOT.

ALL NEW POWER LINES WILL BE PLACED UNDERGROUND.

IRON PINS ARE SET AT ALL PROPERTY CORNERS.

THE PROPERTY IS SUBJECT TO A FLOOD EASEMENT TO ELEVATION 945 AND ALL OTHER RESERVATIONS, RESTRICTIONS AND EASEMENTS RECORDED IN DEED BOOK 601, PAGE, 163.

NO.	DATE	DESCRIPTION	BY
1	07-12-01	REVISED LOTS	SMS

GVG & A

GERALD V. GRANT & ASSOCIATES

P.O. BOX 268
 STATESVILLE, NC 28687
 PHONE: (704) 872-3136

DRAWING NO: 00023-FINAL-PAGE8