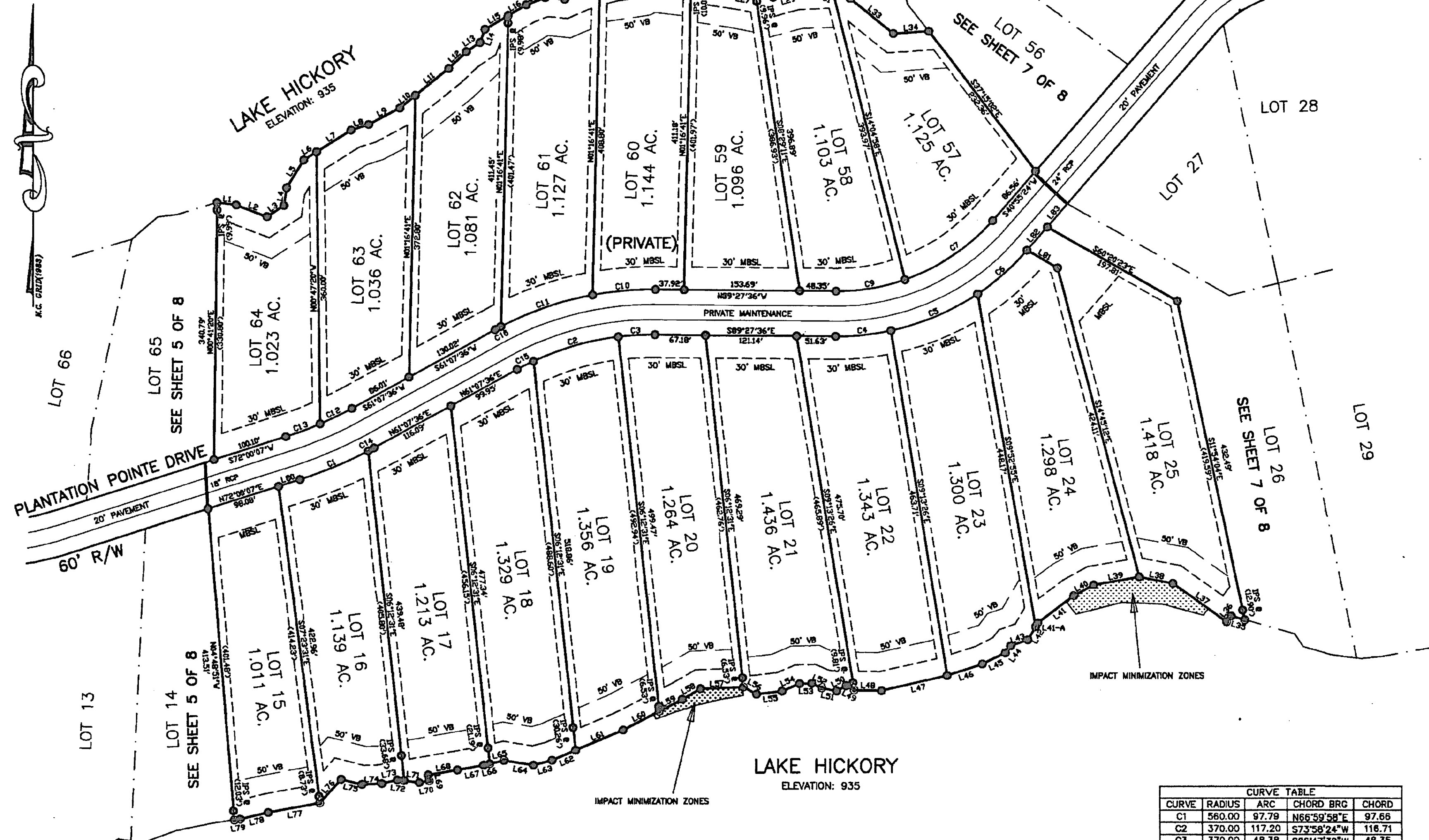


1	07-12-01	REVISED LOTS	SMS
NO.	DATE	DESCRIPTION	BY

LINE	LENGTH	BEARING
L1	25.54	S82°47'12"E
L2	43.50	S69°21'26"E
L3	26.72	N56°27'05"E
L4	23.65	N08°46'19"E
L5	43.32	N31°55'31"E
L6	20.05	N57°33'08"E
L7	53.56	N57°33'08"E
L8	24.55	N72°14'55"E
L9	46.52	N62°02'47"E
L10	26.59	N50°52'31"E
L11	56.64	N50°52'31"E
L12	32.12	N46°19'17"E
L13	21.77	N56°18'21"E
L14	18.63	N20°37'04"E
L15	35.52	N59°19'56"E
L16	27.67	N59°19'56"E
L17	27.08	N69°01'24"E
L18	25.89	S84°50'02"E
L19	39.12	N66°51'26"E
L20	10.37	N75°59'54"E
L21	20.50	N75°59'54"E
L22	32.89	N81°54'21"E
L23	14.60	N65°12'57"E
L24	55.69	S83°24'52"E
L25	27.64	S69°14'22"E
L26	36.59	S81°11'54"E
L27	24.37	S79°08'58"E
L28	23.61	S79°08'58"E
L29	32.71	N74°58'29"E
L30	44.07	N88°09'36"E
L31	3.56	S66°26'25"E
L32	25.26	S66°26'25"E
L33	73.82	S50°52'25"E
L34	47.12	N86°11'13"E
L35	18.32	N74°16'20"W
L36	9.69	S37°47'54"W
L37	87.47	N54°15'23"W
L38	43.37	N79°06'48"W
L39	61.11	S81°03'39"W
L40	30.04	S61°10'03"W
L41	59.61	S52°47'31"W
L41-A	5.64	S30°11'27"W
L42	20.00	S30°11'27"W
L43	24.18	S70°56'36"W
L44	11.60	S37°12'30"W
L45	33.75	S63°56'39"W
L46	49.07	S71°24'19"W
L47	88.57	S77°10'23"W
L48	36.55	N88°45'05"W
L49	12.00	N61°33'34"W
L50	14.30	S61°05'14"W
L51	20.06	N78°22'31"W
L52	14.70	N65°51'00"W
L53	16.21	S88°42'45"W
L54	25.18	S66°45'15"W
L55	33.85	S83°34'46"W
L56	19.87	N61°36'11"W
L57	57.44	S87°50'37"W
L58	27.98	S59°52'33"W
L59	34.46	S62°34'26"W
L60	53.61	S62°34'26"W
L61	68.00	S66°47'02"W
L62	34.04	S66°47'02"W
L63	25.52	S75°20'06"W
L64	39.47	N80°59'07"W
L65	19.26	S76°57'04"W
L66	8.31	S76°57'04"W
L67	35.33	S79°50'33"W
L68	39.07	S79°50'33"W
L69	7.76	S09°58'38"E
L70	13.39	S79°44'26"W
L71	20.24	N82°44'51"W
L72	8.97	N82°44'51"W
L73	21.08	S76°08'05"W
L74	26.34	S87°29'10"W
L75	28.12	N75°43'58"W
L76	42.31	S41°34'36"W
L77	69.32	S79°22'30"W
L78	37.92	S76°25'55"W
L79	8.09	S81°11'59"W
L80	29.43	S72°00'07"W
L81	46.80	N60°20'23"W
L82	40.79	S40°55'24"W
L83	40.79	S40°55'24"W

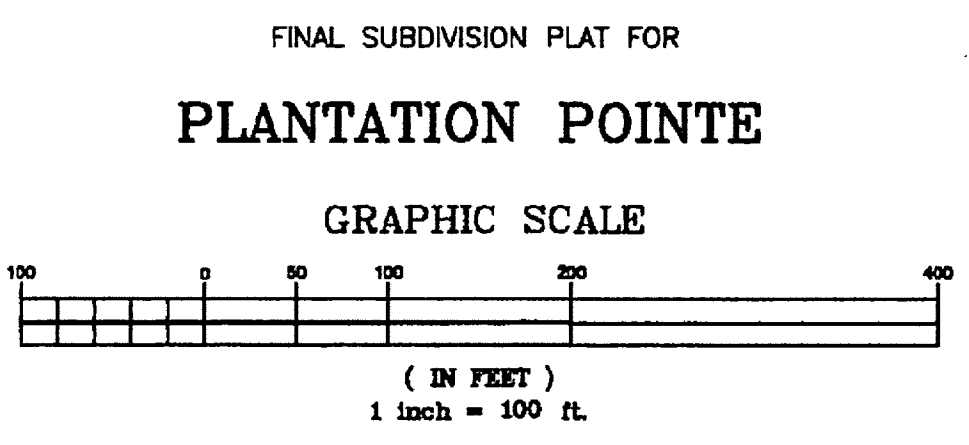
CURVE	RADIUS	ARC	CHORD BRG	CHORD
C1	560.00	97.79	N66°59'58"E	97.66
C2	370.00	117.20	S73°58'24"W	118.71
C3	370.00	48.38	S86°47'38"W	48.35
C4	330.00	73.74	N84°08'20"E	73.59
C5	330.00	124.87	N66°53'52"E	124.12
C6	330.00	87.17	N48°29'26"E	88.91
C7	270.00	141.11	S55°53'46"W	139.51
C8				
C9	270.00	92.70	N80°42'16"E	92.24
C10	430.00	83.51	S84°58'34"W	83.38
C11	430.00	128.53	S70°50'57"W	128.05
C12	500.00	46.51	N63°47'29"E	46.49
C13	500.00	48.40	N69°13'45"E	48.38
C14	560.00	8.51	N61°33'42"E	8.51
C15	370.00	24.36	N63°00'46"E	24.36
C16	430.00	8.70	S81°42'23"W	8.70



NOTES:
 THERE IS A TEN FOOT DRAINAGE AND UTILITIES EASEMENT ACROSS THE FRONT, REAR, AND EACH SIDELINE OF EACH LOT.
 ALL NEW POWER LINES WILL BE PLACED UNDERGROUND.
 IRON PINS ARE SET AT ALL PROPERTY CORNERS.
 THE PROPERTY IS SUBJECT TO A FLOOD EASEMENT TO ELEVATION 945 AND ALL OTHER RESERVATIONS, RESTRICTIONS AND EASEMENTS RECORDED IN DEED BOOK 601, PAGE, 163.

LEGEND:
 IPS-----IRON PIN SET
 CMS-----CONCRETE MONUMENT SET (CONTROL CORNER)
 SD-----SIGHT DISTANCE EASEMENT
 RCP-----REINFORCED CONCRETE PIPE
 MBSL-----MINIMUM BUILDING SETBACK LINE
 ●-----UNMARKED POINT
 VB-----50' VEGETATIVE BUFFER

MINIMUM BUILDING SETBACK LINES:
 FRONT-----30 FEET
 SIDELINE-----10 FEET
 SIDELINE ABUTTING STREET-----30 FEET
 REAR-----25 FEET



GVG & A
 GERALD V. GRANT
 & ASSOCIATES
 P.O. BOX 268
 STATESVILLE, NC 28687
 PHONE: (704) 872-3136

DRAWING NO: 00023-FINAL-PAGES