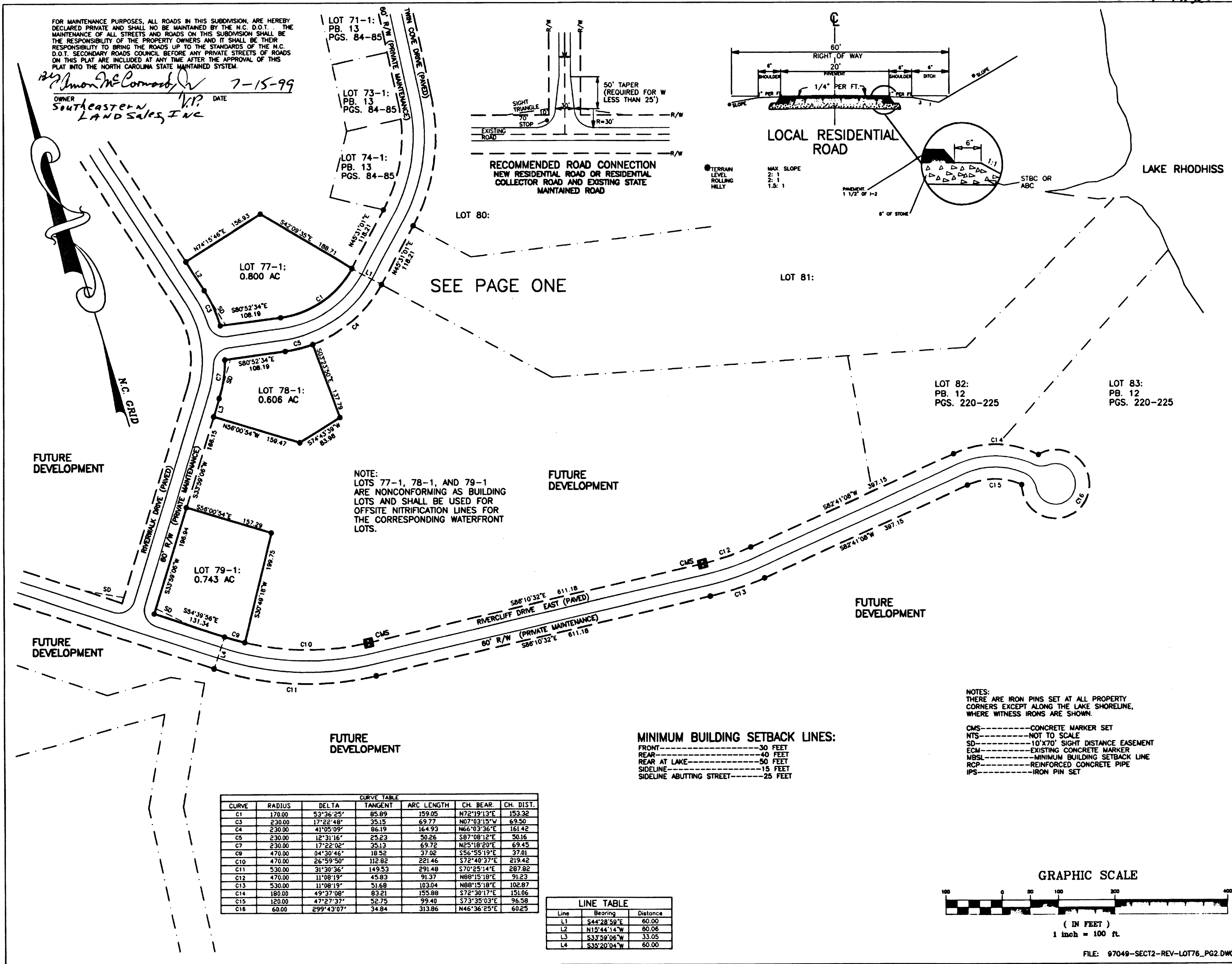


FOR MAINTENANCE PURPOSES, ALL ROADS IN THIS SUBDIVISION, ARE HEREBY DECLARED PRIVATE AND SHALL NOT BE MAINTAINED BY THE N.C. D.O.T. THE MAINTENANCE OF ALL STREETS AND ROADS ON THIS SUBDIVISION SHALL BE THE RESPONSIBILITY OF THE PROPERTY OWNERS AND IT SHALL BE THEIR RESPONSIBILITY TO BRING THE ROADS UP TO THE STANDARDS OF THE N.C. D.O.T. SECONDARY ROADS COUNCIL BEFORE ANY PRIVATE STREETS OF ROADS ON THIS PLAT ARE INCLUDED AT ANY TIME AFTER THE APPROVAL OF THIS PLAT INTO THE NORTH CAROLINA STATE MAINTAINED SYSTEM.

OWNER: *Simon McCombs* DATE: 7-15-99
 Southeastern Land Sales, Inc.



SEE PAGE ONE

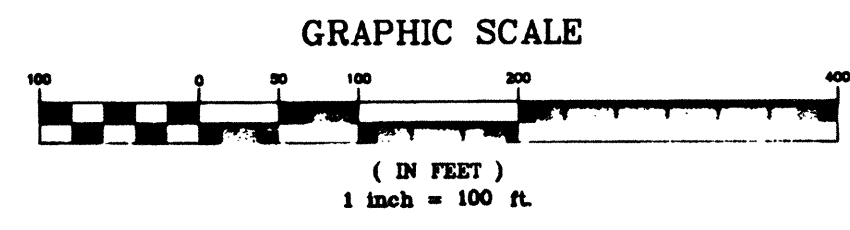
NOTE: LOTS 77-1, 78-1, AND 79-1 ARE NONCONFORMING AS BUILDING LOTS AND SHALL BE USED FOR OFFSITE NITRIFICATION LINES FOR THE CORRESPONDING WATERFRONT LOTS.

MINIMUM BUILDING SETBACK LINES:
 FRONT-----30 FEET
 REAR-----40 FEET
 REAR AT LAKE-----50 FEET
 SIDELINE-----15 FEET
 SIDELINE ABUTTING STREET-----25 FEET

NOTES:
 THERE ARE IRON PINS SET AT ALL PROPERTY CORNERS EXCEPT ALONG THE LAKE SHORELINE, WHERE WITNESS IRONS ARE SHOWN.
 CMS-----CONCRETE MARKER SET
 NTS-----NOT TO SCALE
 SD-----10'X70' SIGHT DISTANCE EASEMENT
 ECM-----EXISTING CONCRETE MARKER
 MBSL-----MINIMUM BUILDING SETBACK LINE
 RCP-----REINFORCED CONCRETE PIPE
 IPS-----IRON PIN SET

CURVE	RADIUS	DELTA	TANGENT	ARC LENGTH	CH. BEAR.	CH. DIST.
C1	170.00	53°36'25"	85.89	159.05	N72°19'13"E	153.32
C3	230.00	17°22'48"	35.15	69.77	N07°03'15"W	69.50
C4	230.00	41°05'09"	86.19	164.93	N66°03'35"E	161.42
C5	230.00	12°31'16"	25.23	50.25	S97°08'12"E	50.16
C7	230.00	17°22'02"	35.13	69.72	N25°18'20"E	69.45
C9	470.00	04°30'46"	18.52	37.02	S56°55'19"E	37.01
C10	470.00	26°59'50"	112.82	221.46	S72°40'37"E	219.42
C11	530.00	31°30'36"	149.53	291.48	S70°25'14"E	287.82
C12	470.00	11°08'19"	45.83	91.37	N88°15'18"E	91.23
C13	530.00	11°08'19"	51.68	103.04	N88°15'18"E	102.87
C14	180.00	49°37'08"	83.21	155.88	S72°30'17"E	151.05
C15	120.00	47°27'37"	52.75	99.40	S73°35'03"E	96.58
C16	60.00	299°43'07"	34.84	313.86	N46°36'25"E	60.25

Line	Bearing	Distance
L1	S44°28'59"E	60.00
L2	N15°44'14"W	60.06
L3	S33°59'06"W	33.05
L4	S38°20'04"W	60.00



FILE: 97049-SECT2-REV-LOT76_PG2.DWG

DRAWING NUMBER

DRAWING NUMBER

DRAWING NUMBER

PLAN HOLD CORPORATION • IRVINE, CALIFORNIA
 REVISION BY NUMBER 07/98
 REVISION BY NUMBER 07/98
 REVISION BY NUMBER 07/98