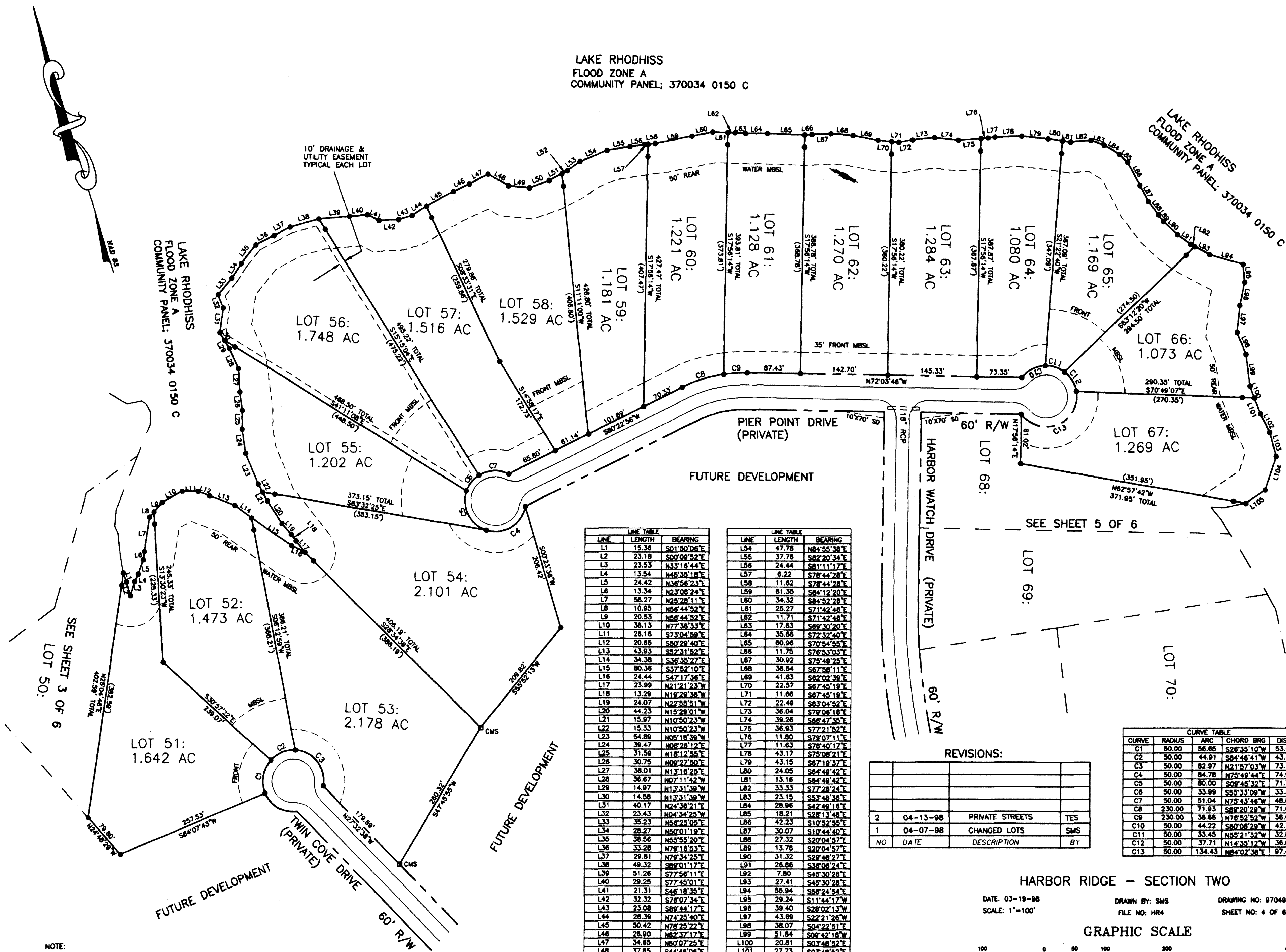


LAKE RHODISS
FLOOD ZONE A
COMMUNITY PANEL; 370034 0150 C

LAKE RHODISS
FLOOD ZONE A
COMMUNITY PANEL; 370034 0150 C



LINE	LENGTH	BEARING
L1	15.36	S01°50'06"E
L2	23.18	S00°09'52"E
L3	23.53	N33°16'44"E
L4	13.54	N45°35'18"E
L5	24.42	N36°56'23"E
L6	13.34	N23°08'24"E
L7	56.27	N25°28'11"E
L8	10.95	N56°44'52"E
L9	20.53	N56°44'52"E
L10	38.13	N77°38'33"E
L11	28.16	S73°04'59"E
L12	20.85	S50°29'40"E
L13	43.93	S52°31'52"E
L14	34.38	S36°35'27"E
L15	80.38	S37°52'10"E
L16	24.44	S47°17'36"E
L17	23.99	N21°21'23"W
L18	13.29	N19°29'36"W
L19	24.07	N22°55'51"W
L20	44.23	N15°29'01"W
L21	15.97	N10°50'23"W
L22	15.33	N10°50'23"W
L23	54.89	N05°18'59"W
L24	39.47	N08°28'12"E
L25	31.59	N18°12'55"E
L26	30.75	N09°27'50"E
L27	38.01	N17°18'25"E
L28	36.67	N07°11'42"W
L29	14.97	N13°31'39"W
L30	14.58	N13°31'39"W
L31	40.17	N24°38'21"E
L32	23.43	N04°34'25"W
L33	35.23	N56°24'05"E
L34	28.27	N50°01'19"E
L35	36.56	N55°55'20"E
L36	33.28	N79°18'53"E
L37	29.81	N79°34'25"E
L38	49.32	S89°01'17"E
L39	51.26	S77°58'11"E
L40	29.25	S77°45'01"E
L41	21.31	S46°18'35"E
L42	32.32	S78°07'34"E
L43	23.08	S89°44'17"E
L44	28.39	N74°25'40"E
L45	50.42	N78°25'22"E
L46	28.90	N82°37'17"E
L47	34.65	N80°07'25"E
L48	37.85	S44°48'08"E
L49	34.84	S66°58'07"E
L50	34.72	N87°36'39"E
L51	24.17	N79°02'39"E
L52	9.89	N79°02'39"E
L53	28.12	N89°57'55"E

LINE	LENGTH	BEARING
L54	47.78	N84°55'38"E
L55	37.76	S82°20'34"E
L56	24.44	S81°11'17"E
L57	6.22	S78°44'28"E
L58	11.62	S78°44'28"E
L59	61.35	S84°12'20"E
L60	34.32	S84°52'28"E
L61	25.27	S71°42'48"E
L62	11.71	S71°42'48"E
L63	17.63	S89°30'20"E
L64	35.66	S72°32'40"E
L65	80.96	S70°54'55"E
L66	11.75	S76°53'03"E
L67	30.92	S75°48'25"E
L68	36.54	S87°56'11"E
L69	41.83	S82°02'38"E
L70	22.57	S87°45'18"E
L71	11.66	S87°45'18"E
L72	22.48	S85°04'52"E
L73	36.04	S79°08'18"E
L74	39.26	S86°47'35"E
L75	36.93	S77°21'52"E
L76	11.80	S79°07'11"E
L77	11.63	S78°40'17"E
L78	43.17	S78°08'21"E
L79	43.15	S87°19'37"E
L80	24.05	S87°19'37"E
L81	13.16	S84°48'42"E
L82	33.33	S77°28'24"E
L83	23.15	S87°48'36"E
L84	28.96	S42°48'18"E
L85	18.21	S28°13'48"E
L86	42.23	S10°52'55"E
L87	30.07	S10°44'40"E
L88	27.32	S20°04'57"E
L89	13.76	S20°04'57"E
L90	31.32	S28°48'27"E
L91	26.86	S36°08'24"E
L92	7.80	S45°30'28"E
L93	27.41	S45°30'28"E
L94	55.94	S58°24'54"E
L95	29.24	S11°44'17"W
L96	39.40	S28°02'13"W
L97	43.89	S22°21'26"W
L98	38.07	S04°22'51"E
L99	51.84	S08°42'18"W
L100	20.81	S03°48'52"E
L101	27.73	S03°48'52"E
L102	34.43	S08°38'00"E
L103	39.96	S02°05'48"W
L104	58.07	S34°43'07"W
L105	39.02	S72°50'40"W

REVISIONS:

NO	DATE	DESCRIPTION	BY
2	04-13-98	PRIVATE STREETS	TES
1	04-07-98	CHANGED LOTS	SMS

CURVE TABLE

CURVE	RADIUS	ARC	CHORD	BRG	DIST.
C1	50.00	56.85	S28°35'10"W		53.67
C2	50.00	44.91	S8°48'41"W		43.42
C3	50.00	82.97	N21°57'03"W		73.77
C4	50.00	84.78	N75°49'44"E		74.98
C5	50.00	80.00	S08°48'32"E		71.73
C6	50.00	33.99	S55°33'09"W		33.34
C7	50.00	51.04	N75°43'48"W		48.85
C8	230.00	71.93	S89°20'29"W		71.64
C9	230.00	38.66	N76°52'52"W		38.64
C10	50.00	44.22	S80°08'29"W		42.79
C11	50.00	33.45	N55°21'32"W		32.83
C12	50.00	37.71	N14°35'12"W		36.82
C13	50.00	134.43	N8°02'38"E		97.45

HARBOR RIDGE - SECTION TWO

DATE: 03-18-98 DRAWN BY: SMS DRAWING NO: 97049
 SCALE: 1"=100' FILE NO: HR4 SHEET NO: 4 OF 6

GRAPHIC SCALE

(IN FEET)
1 inch = 100 ft.

NOTE:
IRON PINS SET AS WITNESS IRONS
ARE SET 20' BACK FROM 995 CONTOUR
LINE ON EACH LOT LINE.