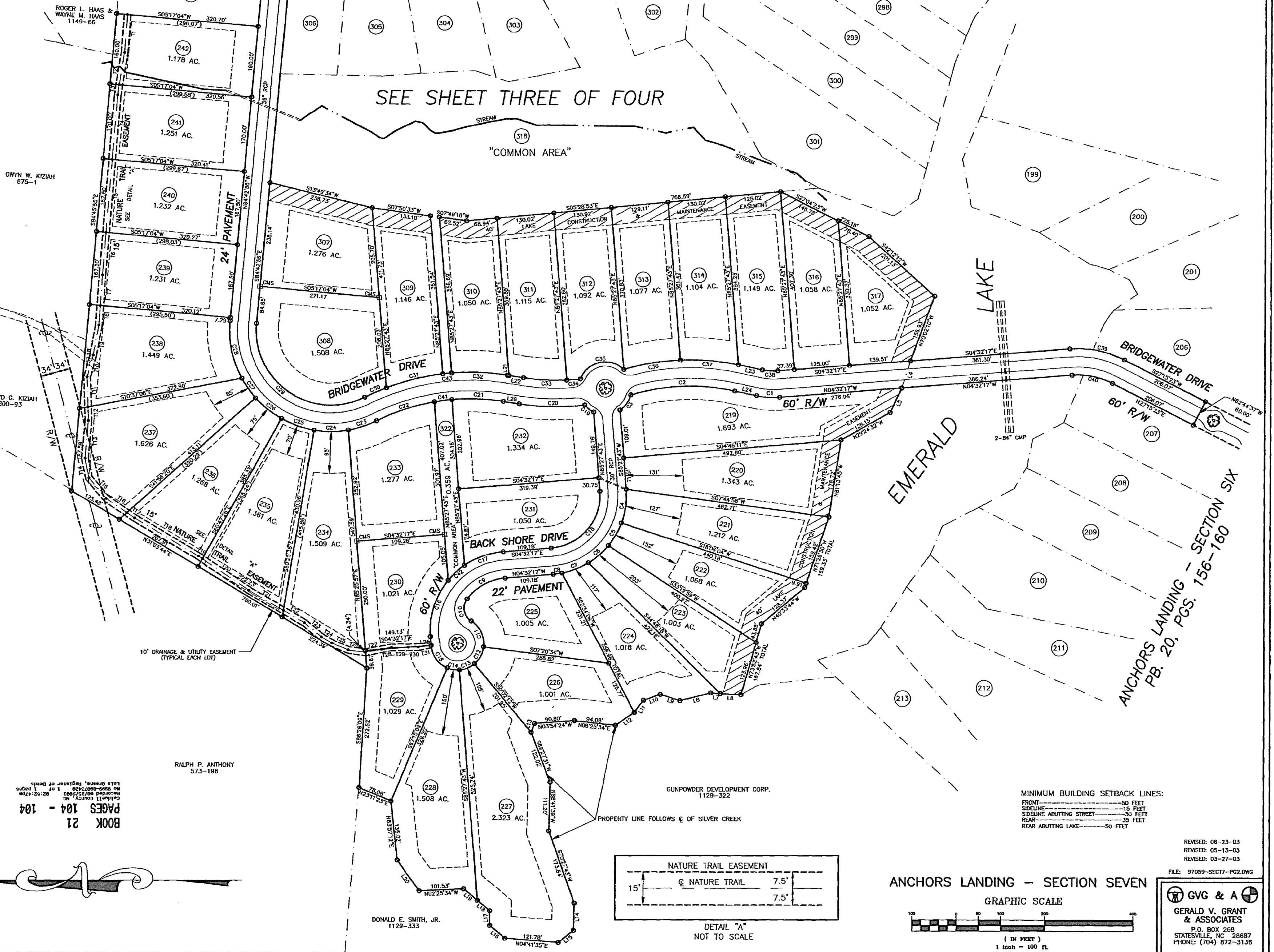


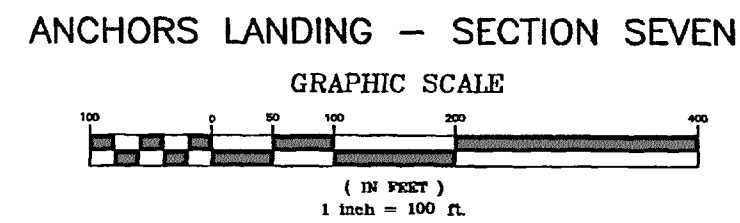
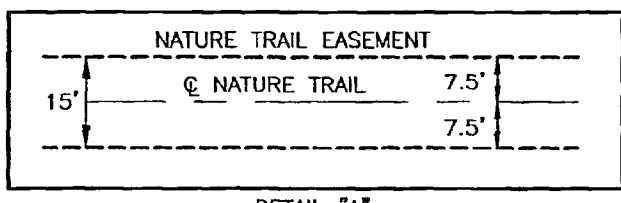
LINE	LENGTH	BEARING
L4	64.98	N71°57'59"W
L5	61.90	N65°29'20"W
L6	46.15	N53°09'37"E
L7	21.53	N53°09'37"E
L8	72.16	N13°43'15"W
L9	46.26	N17°26'51"E
L10	40.68	N18°42'00"W
L11	34.52	N53°01'43"W
L12	51.40	N34°27'33"W
L13	21.34	N16°14'47"W
L14	61.69	N88°21'06"W
L15	44.08	N38°50'19"W
L16	45.23	N39°39'06"E
L17	33.47	N89°45'55"E
L18	36.20	N39°41'31"E
L19	40.02	N39°41'31"E
L20	85.79	N54°02'20"E
L21	3.86	N88°49'58"E
L22	33.27	N88°49'58"E
L23	55.46	S12°08'21"W
L24	56.70	S12°09'41"W
L25	28.45	S22°27'31"E
L26	37.13	N88°49'58"E

CURVE	LENGTH	RADIUS	CHORD	BEARING	DISTANCE
C1	22.46	180.00	S83°48'42"E		25.28
C2	237.93	470.00	N82°20'29"W		235.40
C3	42.67	60.00	S54°04'39"E		40.71
C4	78.11	180.00	S82°06'24"E		77.50
C5	59.57	180.00	S50°11'41"E		59.30
C6	63.69	180.00	S41°09'27"E		59.82
C7	64.66	180.00	S31°17'42"E		64.31
C8	20.31	180.00	S07°46'16"E		20.30
C9	101.90	120.00	N68°51'25"W		98.87
C10	58.06	35.00	S79°15'53"W		51.64
C11	68.72	60.00	N64°31'56"E		65.02
C12	44.71	60.00	S61°18'37"E		43.68
C13	37.10	60.00	S22°15'02"E		36.51
C14	28.57	60.00	S09°16'17"W		28.30
C15	65.67	60.00	S54°06'17"W		62.44
C16	137.48	180.00	N72°39'29"W		134.16
C17	94.25	180.00	N19°32'17"W		93.17
C18	168.50	120.00	S49°32'17"E		169.71
C19	26.07	60.00	S37°54'25"W		25.87
C20	143.04	543.95	S00°59'00"W		148.57
C21	117.89	475.76	N81°46'56"E		116.79
C22	130.07	475.76	N10°54'20"W		137.58
C23	68.00	230.00	S18°15'07"E		67.75
C24	77.70	230.00	S00°06'15"E		77.33
C25	78.82	230.00	S79°25'44"W		78.44
C26	75.68	230.00	S38°58'07"W		75.33
C27	54.17	230.00	S54°49'29"W		54.04
C28	135.48	230.00	S78°25'11"W		133.45
C29	362.00	170.00	S34°16'54"W		297.38
C30	52.96	525.76	N23°23'23"W		52.93
C31	132.13	525.76	N13°59'36"W		131.79
C32	127.37	525.76	N82°01'19"E		127.07
C33	280.64	483.95	S29°52'44"W		284.83
C34	31.08	483.95	S44°41'13"E		31.07
C35	119.65	60.00	N12°25'53"W		102.78
C36	129.94	330.00	N57°38'42"W		129.61
C37	131.08	330.00	N4°39'44"E		131.54
C38	34.98	120.00	S03°48'42"W		34.85
C39	127.63	230.00	N11°21'33"E		126.00
C40	94.84	170.00	N11°21'33"E		93.13
C41	40.07	475.76	S17°40'22"E		40.86
C42	51.81	180.00	S42°39'25"E		50.84
C43	20.01	525.76	N85°15'14"W		20.01

LINE	LENGTH	BEARING
T1	86.51	N85°28'39"W
T2	73.67	S89°53'27"E
T3	22.75	S89°53'27"E
T4	147.31	S85°16'27"E
T5	167.51	S85°16'27"E
T6	97.36	S85°16'27"E
T7	76.16	S85°00'20"E
T8	44.25	S85°00'20"E
T9	69.21	S79°25'19"E
T10	51.79	S74°28'45"E
T11	68.29	N88°05'48"E
T12	31.17	N88°05'48"E
T13	35.36	S65°45'45"E
T14	45.72	N78°17'48"E
T15	139.69	N49°43'29"E
T16	91.99	S1°54'48"W
T17	127.82	N34°54'47"E
T18	32.91	S32°45'47"E
T19	11.03	N84°17'02"E
T20	127.83	N14°17'02"E
T21	90.52	S00°22'00"W
T22	55.73	S30°22'09"W
T23	50.08	N29°21'07"E
T24	27.17	N31°03'44"E
T25	48.27	N23°16'28"E
T26	48.21	N07°59'19"E
T27	26.97	N11°16'53"W
T28	22.99	N11°16'53"W
T29	37.58	N82°27'42"W
T30	22.38	N82°27'42"W
T31	29.55	N82°27'42"W



BOOK 21
PAGES 104 - 104



REVISIONS:
REVISED: 08-23-03
REVISED: 05-13-03
REVISED: 03-21-03
FILE: 97059-SECT7-PG2.DWG
G & A
GERALD V. GRANT & ASSOCIATES
P.O. BOX 268
STATESVILLE, NC 28687
PHONE: (704) 872-3136