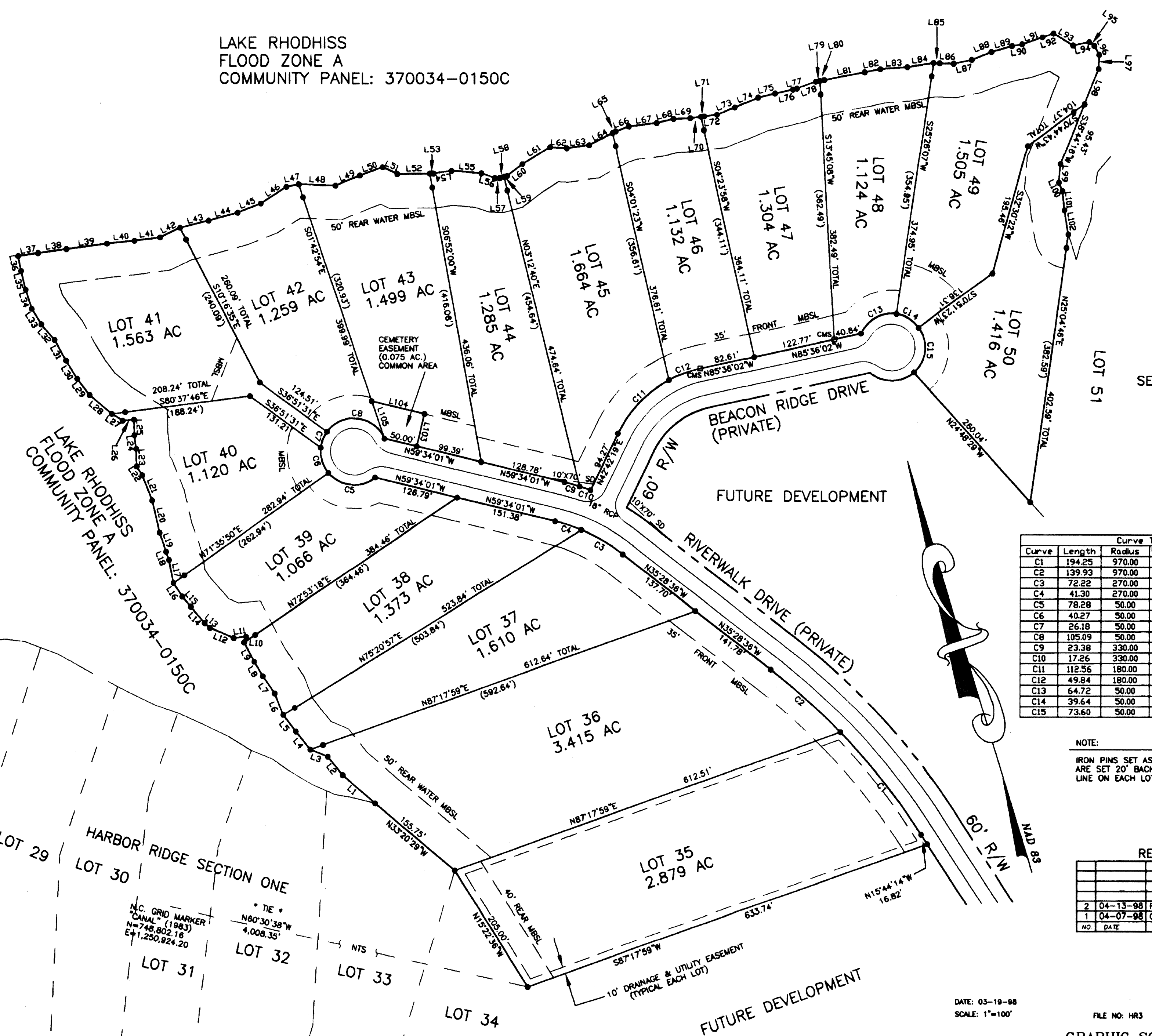


LAKE RHODHISS
FLOOD ZONE A
COMMUNITY PANEL: 370034-0150C

LAKE RHODHISS
FLOOD ZONE A
COMMUNITY PANEL: 370034-0150C

SEE SHEET 4 OF 6



Line	Length	Bearing
L1	64.34	N32°17'47"W
L2	35.26	N22°14'10"W
L3	28.11	N50°54'19"W
L4	34.55	N22°21'57"W
L5	31.06	N20°27'24"W
L6	34.56	N04°42'13"W
L7	30.90	N17°58'28"W
L8	24.95	N15°10'22"W
L9	32.28	N10°57'18"W
L10	9.26	N36°06'46"E
L11	18.68	N79°29'55"W
L12	38.45	N50°15'07"W
L13	10.56	N31°03'52"W
L14	31.68	N24°00'51"W
L15	19.49	N24°11'30"W
L16	24.36	N16°23'10"W
L17	35.23	N05°57'14"E
L18	12.52	N03°26'16"W
L19	29.68	N03°15'52"W
L20	49.08	N03°53'21"E
L21	40.23	N04°52'43"W
L22	15.90	N15°21'04"W
L23	26.03	N15°42'52"E
L24	20.72	N09°03'01"E
L25	23.50	N15°41'03"E
L26	16.99	N78°52'40"W
L27	19.11	N41°01'02"W
L28	43.36	N32°21'34"W
L29	30.79	N20°19'58"W
L30	32.17	N14°08'15"W
L31	34.93	N11°47'57"W
L32	30.94	N23°19'39"W
L33	26.43	N15°24'55"W
L34	30.85	N00°07'09"E
L35	29.13	N03°08'29"E
L36	22.71	N06°00'54"E
L37	30.03	S81°26'30"E
L38	42.55	S80°41'05"E
L39	61.17	S80°24'55"E
L40	41.20	S79°03'44"E
L41	38.47	S80°43'12"E
L42	33.20	N80°31'33"E
L43	44.20	S87°11'56"E
L44	44.86	S88°19'26"E
L45	37.38	N65°36'45"E
L46	45.23	N74°17'15"E
L47	19.08	S84°40'27"E
L48	55.02	S70°54'08"E
L49	39.42	N84°53'35"E
L50	36.41	N87°20'27"E
L51	24.27	S48°11'00"E
L52	49.11	S73°58'22"E
L53	5.34	S73°58'22"E
L54	27.45	S81°09'51"E
L55	44.95	S68°26'41"E
L56	21.25	S54°34'46"E
L57	7.15	S72°48'16"E
L58	7.00	S88°28'55"E
L59	4.69	S88°28'55"E
L60	28.83	N69°46'00"E
L61	48.09	N73°10'41"E
L62	25.02	S69°59'26"E
L63	34.16	S80°39'41"E
L64	39.45	N79°28'20"E
L65	5.19	N79°28'20"E
L66	21.01	N87°02'49"E
L67	41.86	S79°58'59"E
L68	26.04	S86°00'59"E
L69	25.12	S75°42'26"E
L70	16.84	S80°28'29"E
L71	5.04	S80°28'29"E
L72	19.02	S80°28'29"E
L73	38.55	N84°44'58"E
L74	37.54	N84°25'44"E
L75	26.33	S86°23'13"E
L76	27.50	S85°38'01"E
L77	6.04	S86°19'10"E
L78	38.02	N86°58'38"E
L79	6.21	S83°57'08"E
L80	6.82	S83°57'08"E
L81	61.35	S83°57'08"E
L82	23.78	S84°15'36"E
L83	40.29	S77°19'27"E
L84	39.50	S82°02'07"E
L85	8.99	S70°43'12"E
L86	20.98	S70°43'12"E
L87	27.39	S84°46'11"E
L88	31.46	N85°45'32"E
L89	31.63	S88°32'40"E
L90	15.35	S82°35'18"E
L91	31.95	N87°44'33"E
L92	17.45	N87°53'15"E
L93	34.07	S41°23'12"E
L94	24.63	S85°12'21"E
L95	9.77	S36°31'27"E
L96	14.59	S11°34'16"E
L97	20.43	S19°33'06"W
L98	55.82	S38°54'29"W
L99	27.20	S21°48'49"W
L100	13.33	S06°50'21"E
L101	28.59	S11°14'13"W
L102	36.52	S07°54'59"W
L103	50.00	S30°25'59"W
L104	81.42	S59°34'01"E
L105	59.06	S81°42'54"E

Curve	Length	Radius	Chord Bearing	Distance
C1	194.25	970.00	N21°28'28"W	193.93
C2	139.93	970.00	N31°20'38"W	139.81
C3	72.22	270.00	N43°08'24"W	72.01
C4	41.30	270.00	N55°11'06"W	41.26
C5	78.28	50.00	N67°50'53"W	70.52
C6	40.27	50.00	N00°04'16"E	39.19
C7	26.18	50.00	N38°08'29"E	25.88
C8	105.09	50.00	S66°38'52"E	86.79
C9	23.38	330.00	S57°32'15"E	23.37
C10	17.26	330.00	S54°00'33"E	17.26
C11	112.56	180.00	N60°37'12"E	110.74
C12	49.84	180.00	N86°28'01"E	49.68
C13	64.72	50.00	N78°21'09"E	60.30
C14	39.64	50.00	S41°51'15"E	38.61
C15	73.60	50.00	S23°01'27"W	67.13

NOTE:
IRON PINS SET AS WITNESS IRONS
ARE SET 20' BACK FROM 895' CONTOUR
LINE ON EACH LOT LINE.

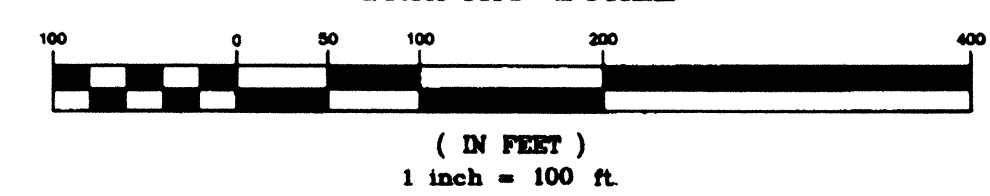
REVISIONS:

NO.	DATE	DESCRIPTION	BY
2	04-13-98	PRIVATE STREETS	TES
1	04-07-98	CHANNELED LOTS	CGW

DATE: 03-19-98
SCALE: 1"=100'

FILE NO: HR3
GRAPHIC SCALE

DRAWING NO: 87049
SHEET NO: 3 OF 6



REVISED: 04-07-98

GVG & A
GERALD V. GRANT
& ASSOCIATES
P.O. BOX 268
STATESVILLE, NC 28687
PHONE: (704) 872-3136